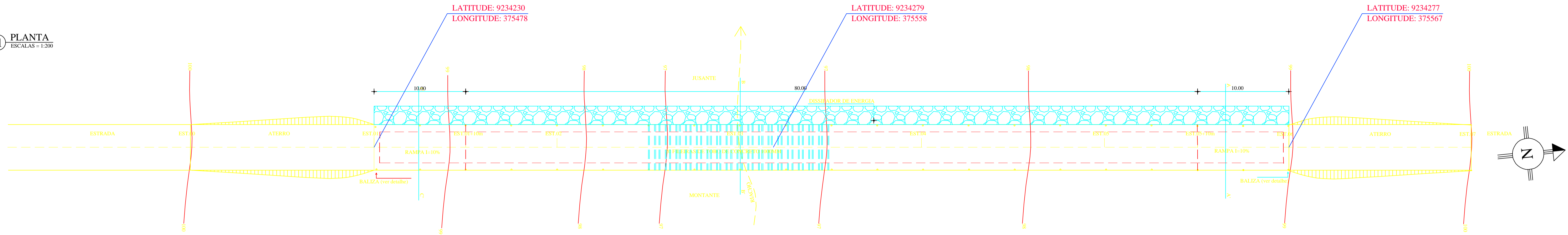
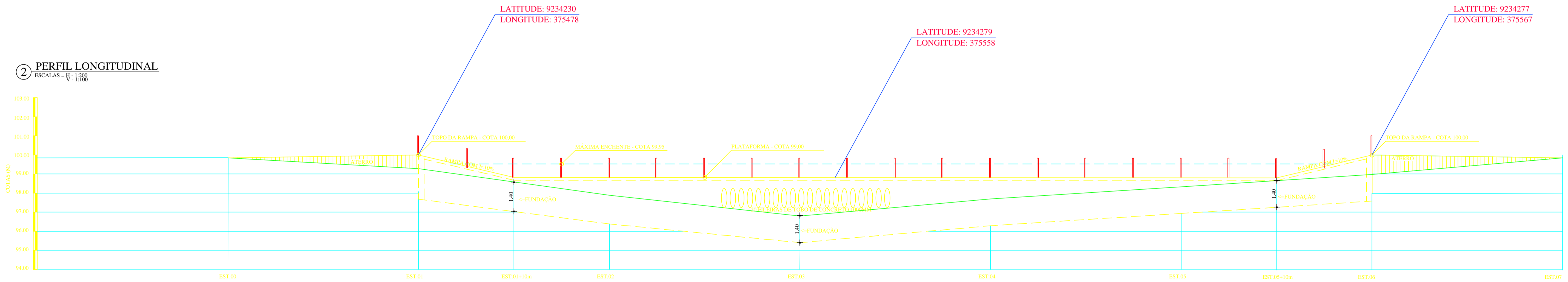


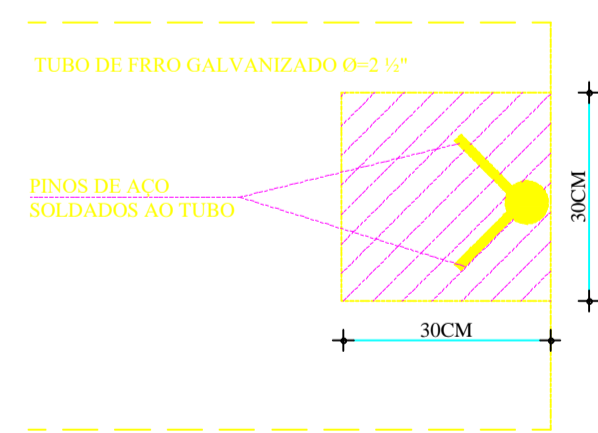
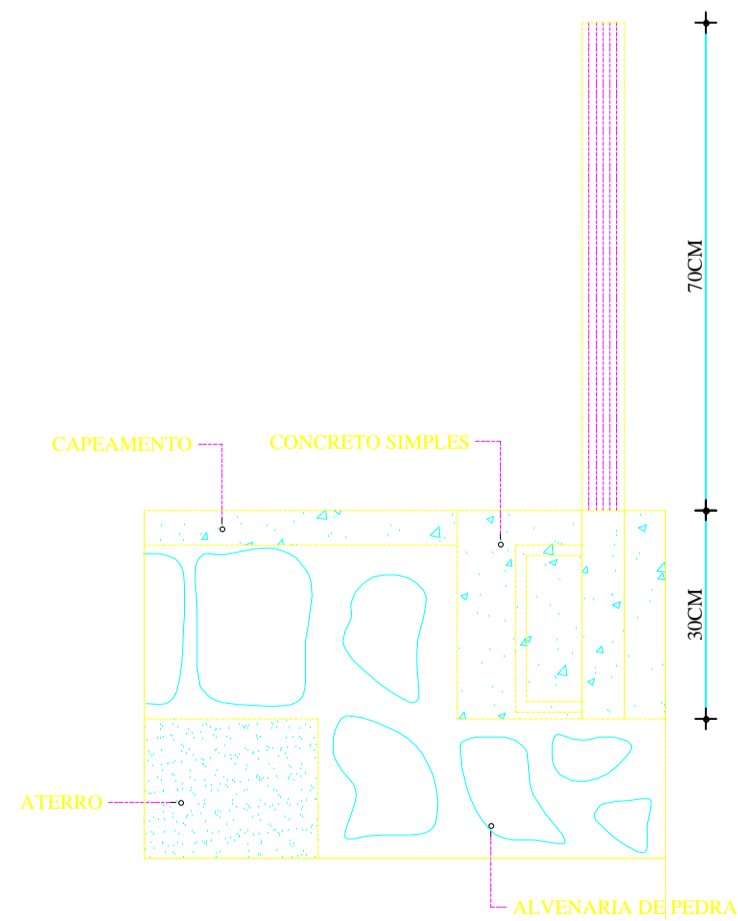
1 PLANTA
ESCALAS = 1:200



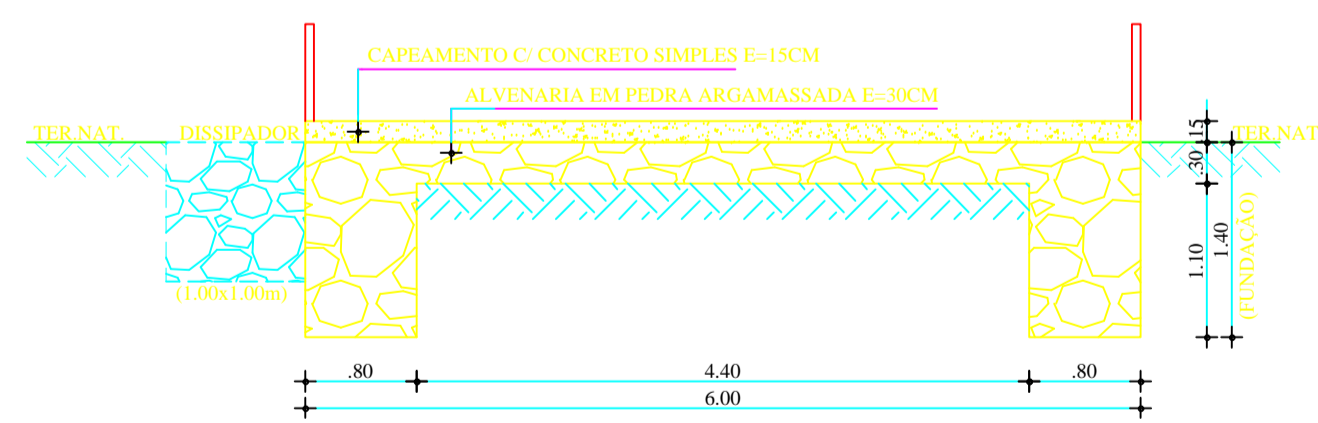
2 PERFIL LONGITUDINAL
ESCALAS = 1:1000



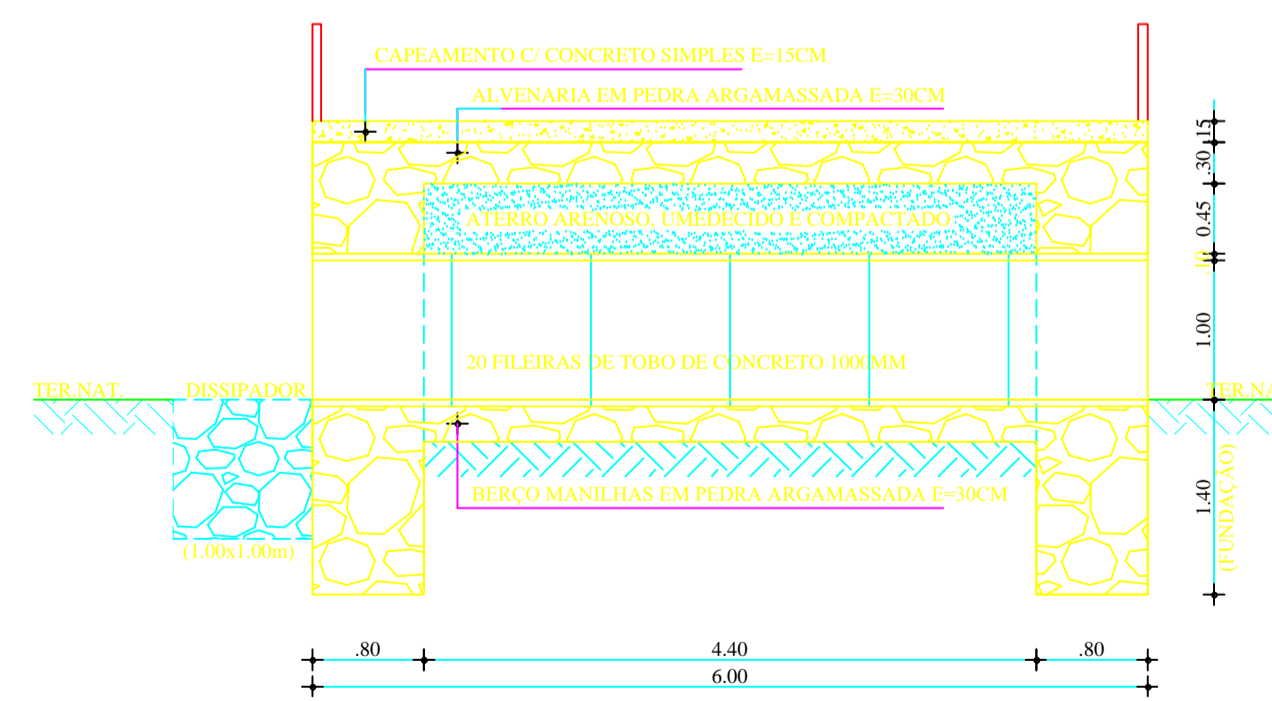
3 DETALHE DE FIXAÇÃO DAS BALIZAS
ESCALAS = 1:10



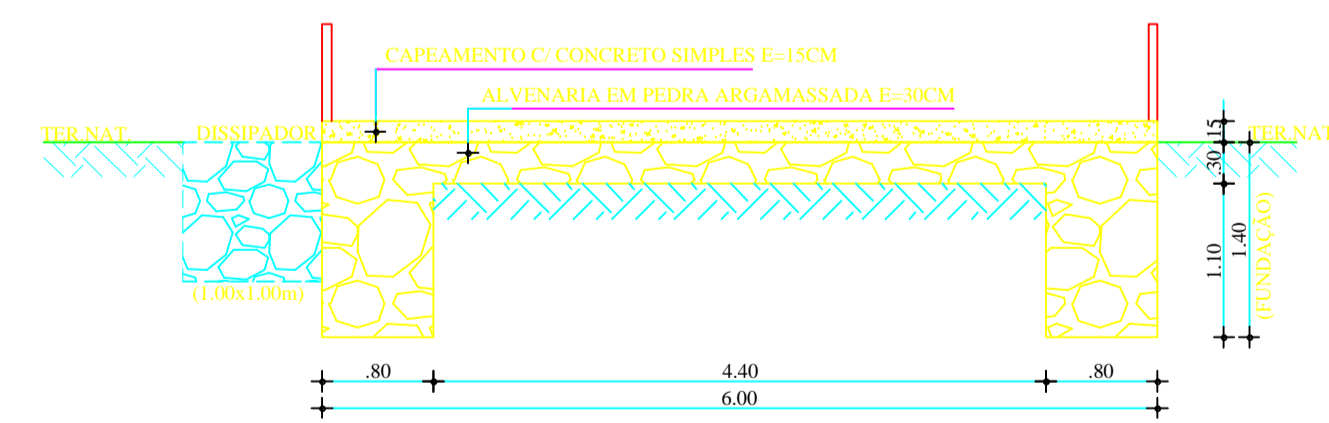
4 CORTE AA'
ESCALAS = 1:50



5 CORTE BB'
ESCALAS = 1:50



6 CORTE CC'
ESCALAS = 1:50



PREFEITURA MUNICIPAL DE
CAMPOS SALES

PROJETO:
CONSTRUÇÃO DA PASSAGEM MOLHADA TATAJUBA

LOCALIDADE:
TATAJUBA - CAMPOS SALES - CE

DATA:
FEV / 2018

ESCALA:
INDICADA

ASSUNTO:
PLANTA BAIXA GEOREFERENCIADA, PERFIL LONG.
FIXAÇÃO DOS BALIZADORES, CORTE AA, BB e CC

PROJETO:
NARCIS DE MELO JUNIOR
CREA: 060753770

PRACHA:
01 / 01